



Straw Corners
STOWE, VERMONT

The Shops at Straw Corners

STOWE, VERMONT



Mountain Road Entrance



Front of Building



Side View

An excellent and desirable location in the middle of Stowe Village at the corner of Routes 108 (Mountain Road & 100 (Main Street).

Local shops, restaurants and hotels are within walking distance of this high-volume traffic location, with plentiful parking in the lot shared by other Straw Corner businesses.



Rear View of Building



Stone Patio

The upper level has a wheel-chair accessible porch, and a stone patio outside of the restaurant space offers an outdoor dining option.



Entrance to Restaurant Area



Counter Area

The lower-level restaurant area has counter/service space, seating room, a half bath, office area and layout for a full-sized kitchen.



Behind the Counter



View from Behind the Counter



Upper Level Looking Towards Front of Building



Reverse View

The large main floor is wheelchair accessible and has two separate entrances.

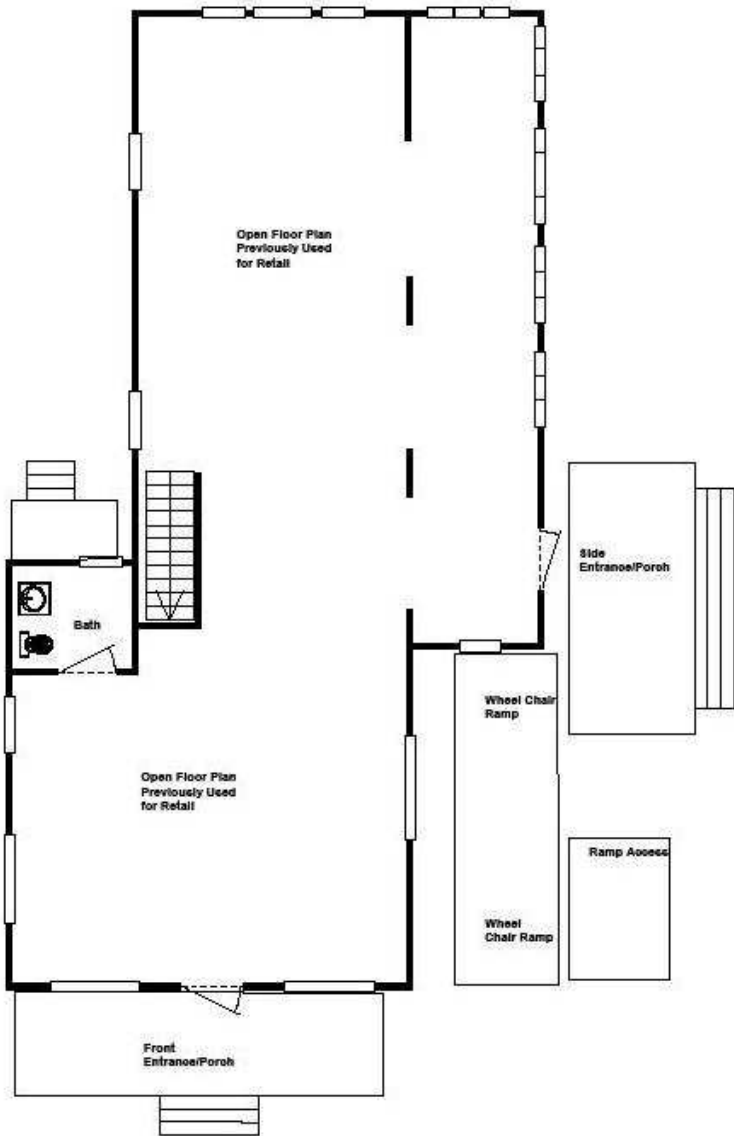


Office

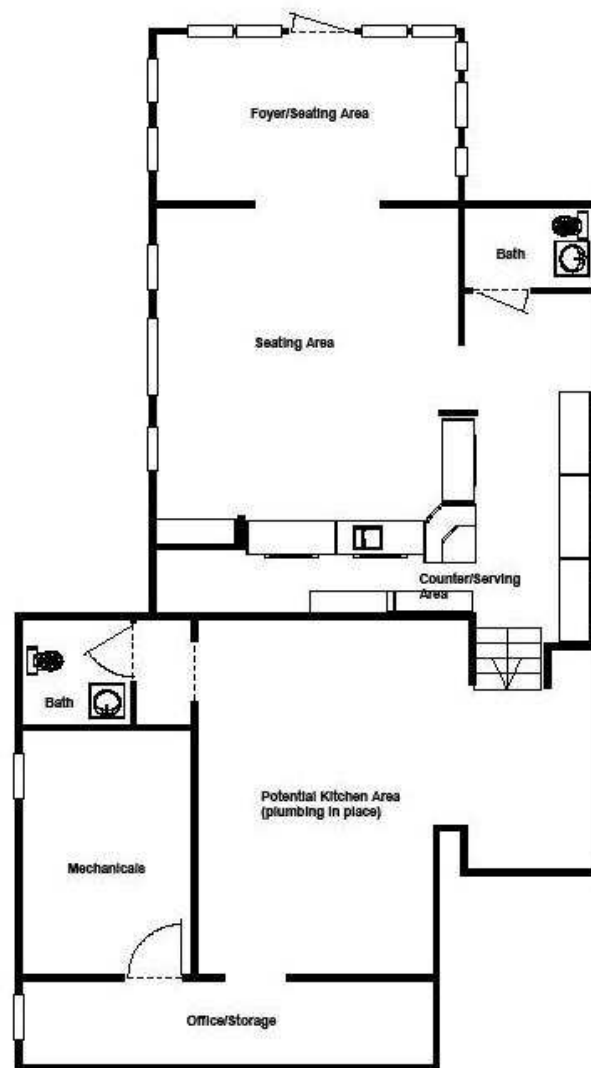


Open to Main Floor Below

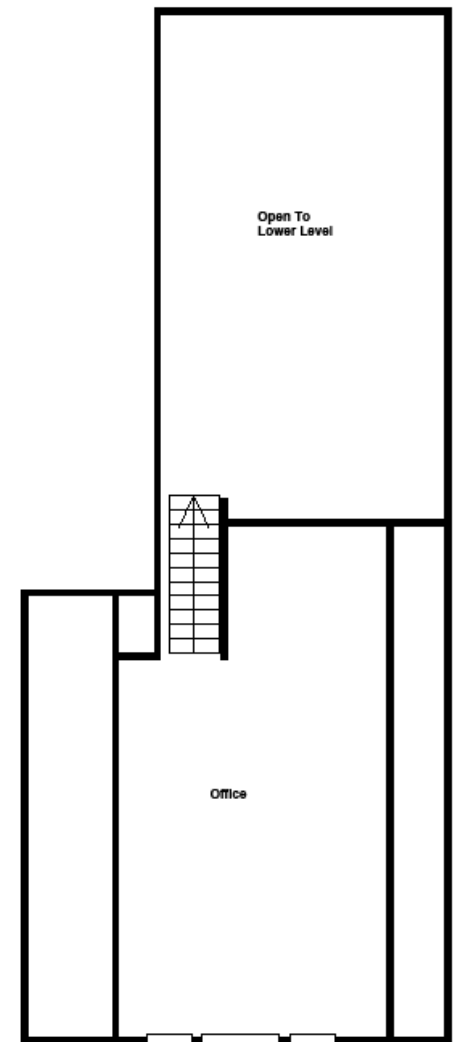
The upper level offers potential office space.



Main Level



Lower Level



Upper Level

Straw Corners floor plan for each level. All measurements/dimensions are approximate.



Sharon Bateman
sharon.bateman@pallspera.com
 Pall Spera Company Realtors - Stowe, VT
 802.253.1806 x11

